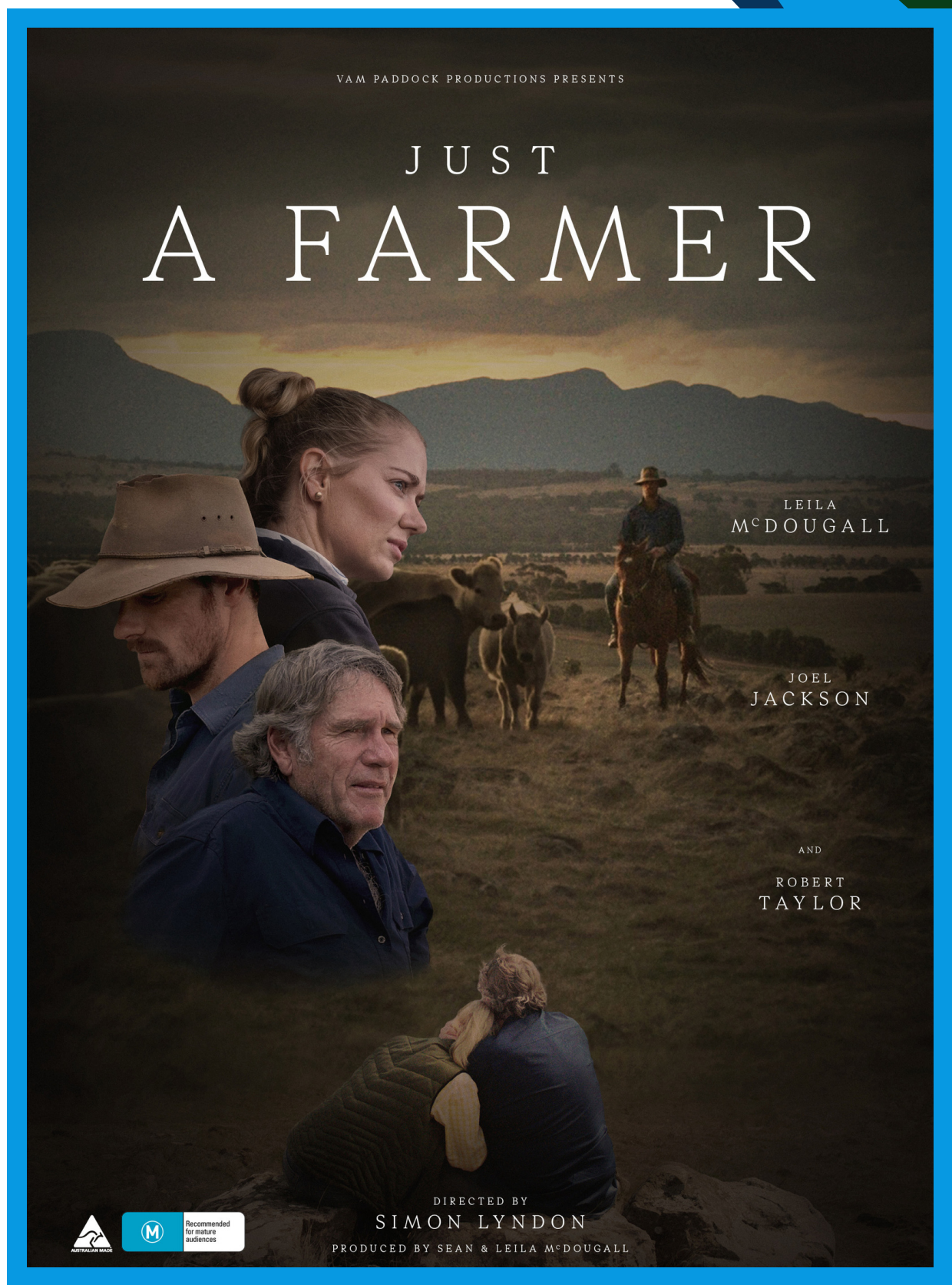


JUST A FARMER TEACHER RESOURCES

A film (2024) directed by Simon Lyndon



VAM PADDOCK PRODUCTIONS PRESENTS

JUST A FARMER

LEILA
MCDUGALL

JOEL
JACKSON

AND
ROBERT
TAYLOR

DIRECTED BY
SIMON LYNDON

PRODUCED BY SEAN & LEILA MCDUGALL



M

Recommended
for mature
audiences

JUST A FARMER

Teacher resource: Terminology and discussion

Film terminology and metalanguage words italicised in student resources

- **Visual language:** the elements of film viewed by an audience to convey a message beyond dialogue.
- **Camera angle:** the angle from which a scene is filmed. ie. close up, high angle, low angle.
- **Costuming and props:** what the characters in the film are wearing and the items included within a scene.
- **Diegetic sound:** heard by both the characters and the audience (sound within the scene).
- **Non-diegetic sound:** only the audience can hear this sound, not the characters.
- **Mise en scène:** the arrangement of the set; all of the components of the scene.
- **Idea/theme:** a central, unifying concept; a universal human experience; the main subject.
- **Dialogue:** the communication/conversation between two or more people.
- **Mood:** how the audience is made to feel about the plot/characters, which can change from scene to scene.
- **Foreshadowing:** a hint of what is to come in later events, can be used to build dramatic tension.
- **Lighting:** the elements of lighting used to create visual impact, texture, or atmosphere, guiding the audience's attention.
- **Stigma:** a set of negative and often unfair beliefs that a society or group associates with a circumstance, quality, or person.
- **Audience:** the viewers of the film (filmmakers aim for an emotional connection to the audience through the storytelling of film).
- **Connotation:** the idea or feeling evoked in a person by the use of a certain word, beyond the literal meaning of that word.

J U S T A F A R M E R

Comments for teachers:

The 'Just A Farmer' student resources are intended as a starting point for a film study and/or teacher-guided mental health discussions. The questions can be adapted or built upon to suit your group of students and their curriculum requirements in the English, Media, and Wellbeing domains.

A strong focus on the importance of **communication, resilience, community, open dialogue**, and seeking help is integral in discussions that lead into talk about mental health and suicide. Refer back to the story told through the film to ground the discussion in characters, moments, and pervading messages; the narrative is a tool for learning.

Essential note on language:

The phrase 'committed suicide' arises from historical laws under which suicide was illegal, as was 'committing murder', and thus has negative overtones and criminal notoriety, which perpetuates the negative stigma around suicide.

Instead, consider that the phrases 'died by suicide' or 'died from suicide' acknowledge that the cause of death is through illness, much like 'died from cancer'. Likewise, suicide is a tragedy, as it is when a person 'dies by drowning'; a person 'drowns', or comparatively, 'suicides'.

Let's change the way we talk about suicide.

If you or someone you know needs help, contact:

<https://www.lifeline.org.au/>

13 11 14

<https://www.beyondblue.org.au/>

1300 22 4636

<https://standbysupport.com.au/>

1300 727 247